

Take a self-directed musical stroll around the parks, beach and canal of leafy Elwood. Sing-along resources, map, route guide and background information provided.

Visit just a few Song Sites, or all of them! Bring a group and make a day of it, or visit your favourite Song Site while walking your dog.

Sing along with Elwood Community Choir and band, via the QR code on our 12 distinctive signs, or access materials via www.esnlc.com.au/elwood-singing-walking-trail

Where can you sing a sea shanty, a waltz, a conga and a song about baking?

Elwood Singing Walking Trail!



Supported by the City of Port Phillip Cultural Development Fund



1) Poets Garden (0 km)



Rear of Elwood St Kilda Neighbourhood Learning Centre, 87 Tennyson St; ESNLC is the home of Elwood Community Choir; **Sing "We Honour the Land"**

2) F.L. Dawkins Reserve (0.9km)



Corner Broadway & Mitford St; sign on park bench; typical Elwood architecture; **Sing "Tumbalalaika"**

3) Sundial beside Elwood Canal (1.3km)



Near Keats St; sign on park bench; link to schools, local writer, old dance hall; **Sing "Carry On"**

4) Elwood Sourdough (2.0km)



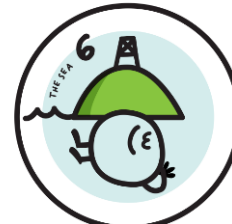
78 Addison St; sign at bakery entrance; local institution; "Spotties" are recommended; **Sing "In Toast We Trust"**

5) Robinson Reserve (2.3km)



Between Barkly St & Marine Parade; sign on park bench; early settlement history; Quarantine Station; **Sing "The Wark o' the Weavers"**

6) Point Ormond Hill (3.1km)



Sign on park bench closest to top of hill; views of Port Phillip Bay and surrounds; **Sing "The Sea"**

7) Point Ormond Café (3.6km)



Foreshore promenade; sign near café; great place to stop for coffee or ice cream; **Sing "La Mar Estaba Serena"**

8) Picnic Area behind Elwood Sailing Club (4.1km)



Sign on pavement in front of picnic table; foreshore bushland; First Nations history; **Sing "Nerm"**

9) Elwood Pier (4.6km)



End of Head St; sign on pier wall; embedded tiles from 1999 arts and local history project; **Sing "Round the Cape"**

10) Head St Reserve (5.1km)



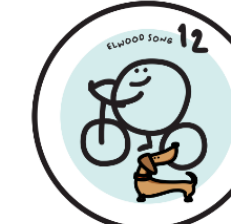
Beside Elwood Croquet Club, 1927; sign on park bench; pretty little park; **Sing "All About Elwood"**

11) Elwood Canal Linear Reserve (5.8km)



Foam St footbridge; sign on footbridge railings; lush, leafy canal walk; **Sing "The Rakali Hop"**

12) The King of Tonga bar (6.8km)



164A Tennyson St; sign at entrance; watering hole for Elwood Community Choir; **Sing "Elwood Song"**

Connect via song with the history, people and environment of Elwood.

Enjoying our signs by **Be Marsupial?** Visit the store while in Elwood! Or explore the online shop www.bemarsupial.com.au

Created by Elwood Community Choir, Jeannie Marsh + friends ©2022