

Issue #12 April 2020

[Campaign Preview](#)

[HTML Source](#)

[Plain-Text Email](#)

[Details](#)

[View this email in your browser](#)



Dear << Test First Name >>

We are missing you all so much during this time of self isolation so we are going to try to put out more regular newsletters over the next few months. We are still working hard and will tell you all about the changes we are making, the good stories we are hearing from our community and much more. We are hoping to offer you some positive reading and things to do. This is the perfect time to think locally, help out your neighbours and keep in touch with your loved ones.

KEEPING IN CONTACT

As our office is closed, we may not be able to answer your calls as quickly as we usually do. We are often working from home so if you want to contact us, please email Melanie about classes on education@esnlc.com.au or Simone on manager@esnlc.com.au. Also keep an eye out on our website www.esnlc.com.au or follow us on Facebook by typing in the search bar Elwood St kilda neighbourhood Learning Centre. <https://www.facebook.com/ElwoodStKildaNeighbourhoodLearningCentre/>

Helping Community During this Difficult Time

Everyone is going through a difficult time at the moment but some more than others. There are so many amazing people living amongst us who have put their hands up to help by making regular phone calls to check people are ok or just for a chat, to get groceries, medication and much more. If you need any help, would like a regular phone call or know someone who does, please contact us and let us know. Phone 9531 1954 or email us on education@esnlc.com.au

New Piano for Elwood Community Choir

Before all this happened, the beautiful and harmonic Elwood Community Choir received a brand new piano with thanks to our always loyal supporter, Bendigo Bank Elwood Community Bank. Keep an eye out here and on our website for details on how the choir will meet over the next few months.



How Does Your Garden Grow?

Poet's Community Garden

Unfortunately Poet's Garden is closed and not open to the public. If you rely on your plot, access will be restricted and strict rules must be followed. We will, however, be sharing tips, videos and information to help you grow food in your own home whether you have a garden or not. Also how to cook with less and from scratch. Keep an eye out for these.

Your Photos

Time to keep an eye out for new growth and flowers, remembering that there is still beauty around us. Please send in YOUR photos of what's growing in your garden (or perhaps something you see on a daily walk). I also want to hear about what new growing projects you have started. It is now time to plant your brassica. Have you started planting for the first time? Time to show off and send us your photos.





GARDEN GIVEAWAY

We have 15 Green Cone Solar Composters to give away thanks to the City of Port Phillip. We would like these cones to go to those who otherwise couldn't afford one, so if you are on a concession card or recently found yourself out of work like so many others, please email me on education@esnlc.com.au with your details and why you would like one of these Green Cones. For example, will you set it up for your whole block of flats to use? Do you want to be green but find it's all too expensive. Please note it is 60cm wide and you will need a patch of dirt to dig it 40cm down and it needs to be in the sun. You will be provided with extensive information on how to use it.

This essentially maintenance-free composter recycles *any* food waste (inc. meat, fish, bones, fruit, dairy) as well as pet waste, into nutrients that enrich the surrounding soil. Utilising an in-ground chamber and innovative twin cone system to circulate warm air between the two cones, it creates the perfect environment for worms and micro-organisms to work their magic at speed.



Our Computer and English Classes

Our regular EAL and Computer classes WILL continue for term 2. We will just start a little late and they will be online but we are welcoming existing and new students back in late April. If you would like to improve your computer skills with our Intermediate Computer class or join our English as Another Language classes please email me on education@esnlc.com.au or ph 9531 1954. All online classes will be free.

At this stage all classes will run at the same time and day as they would have in person. The only class not running will be our Beginner Computer class but we will be offering Beginners an alternative. See the article below "Free help for Computer Beginners".

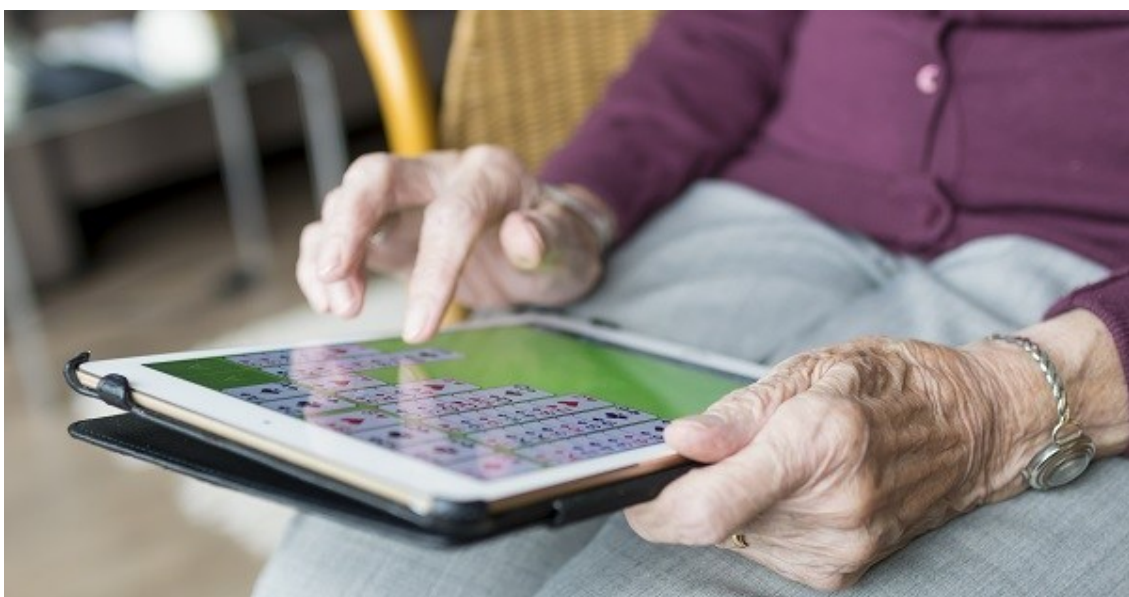
Making Ends Meet

If you haven't already claimed your \$50 Power Saving Bonus via Victorian Energy Compare, now could be a good time to do that!

Visit <https://compare.energy.vic.gov.au/>: Every Victorian household can submit a claim for the Power Saving Bonus. To confirm your eligibility, you will need to meet the following criteria:

- You must have a residential electricity bill and be the account holder for that bill.
- You must be able to receive your bonus payment via mail at the address of your energy service.

If you don't have an electricity service, you can still claim the \$50 Bonus with a gas bill. You might find a better energy deal, and you get \$50 just for checking.



Free Help for Computer Beginners over 50's

We are offering free help for people over 50 years of age who need help getting started on their computer, ipad or Smartphone while they are now staying at home. We can offer a 1 hour phone call with our very smart and patient

computer teacher and two follow up 30 minute calls to help people over 55 years old set up what they need to survive. This may be setting up online shopping, online banking, using Medibank online, how to join Facebook or Skype or anything else they may need. If you would like help or know someone who does, please email education@esnlc.com.au or phone 9531 1954.

AGM
Annual General Meeting

e+snlc

elwood+st. kilda
neighbourhood learning centre

ANNUAL GENERAL MEETING

Our Annual General Meeting will be on 8th May. This will be online. If you would like to attend, please email us on manager@esnlc.com.au or phone 9531 1954.

Your Contributions

We are keen to have contributions of poetry or short stories you may have written or favorite recipes, craft projects, positive local stories or any encouraging thoughts - please email education@esnlc.com.au.

This is what the amazing Lisa Murphy (lisa.mm04 on Instagram), who works with us on Mondays, has been doing. It's called 'Tranquil'. Isn't she talented?



 [Follow us on Facebook, to keep up to date on the latest news!](#)

 [To find out more about courses and to learn more visit our website:](#)

*Copyright © 2020 Elwood St Kilda Neighbourhood Learning Centre, All rights reserved.
You are receiving this email because you opted in via our website.*

Our mailing address is:
Elwood St Kilda Neighbourhood Learning Centre
87 Tennyson Street
Elwood, VIC 3184
Australia

[Add us to your address book](#)

Want to change how you receive these emails?
You can [update your preferences](#) or [unsubscribe from this list](#).

