

WANDER THROUGH THE PARKS, STREETS, BEACH AND CANAL OF ELWOOD ON A SELF-GUIDED MUSICAL ADVENTURE. WITH A ROUTE GUIDE AND SONGS PROVIDED, YOU CAN STOP AT A FEW SONG SITES OR EXPLORE THE WHOLE TRAIL, ENJOYING EVERYTHING FROM A SEA SHANTY TO A WALTZ, A CONGA, AND EVEN A TUNE ABOUT BAKING!

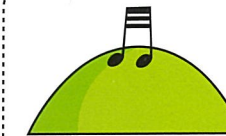
SCAN THE QR CODES ON OUR 12 DISTINCTIVE SIGNS TO HEAR THE ELWOOD COMMUNITY CHOIR AND BAND, OR FIND IT ALL ONLINE AT www.esnlc.com.au/elwood-singing-walking-trail



©2022

was created by

Elwood Community Choir,
Jeannie Marsh + Friends
www.eswtrail@gmail.com



ELWOOD
SINGING
WALKING
TRAIL

SELF-GUIDED, FREE MUSICAL STROLL AROUND
THE PARKS, BEACH AND CANAL OF LEAFY ELWOOD



All our graphic material – logo, signage, and brochure – is created by Be Marsupial. Visit the shop while in Elwood or explore www.bemarsupial.com.au



Supported by the City of Port Phillip
Cultural Development Fund



This brochure was beautifully printed by



Elwood Community Choir



0 KM

1 POETS GARDEN

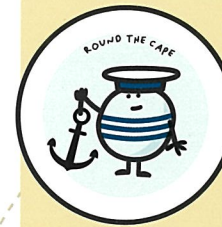
87 Tennyson St Rear of Elwood
St Kilda Neighbourhood Learning
Centre (home of Elwood
Community Choir).
Sing "We Honour the Land"



2.3 KM

5 ROBINSON RESERVE

Between Barkly St & Marine
Parade. Sign on park bench.
Early settlement history.
Quarantine Station.
Sing "The Wark o' the Weavers"



4.6 KM

9 ELWOOD PIER

End of Head St.
Sign on pier wall.
Embedded tiles from 1999 arts
and local history project.
Sing "Round the Cape"



0.9 KM

2 F.L. DAWKINS RESERVE

Corner Broadway & Mitford St
Sign on park bench.
Typical Elwood architecture.
Sing "Tumbalalaika"



3.1 KM

6 POINT ORMOND HILL

Sign on park bench closest
to top of hill.
Views of Port Phillip Bay and
Melbourne Skyline.
Sing "The Sea" and
"The Southern Fiddler Ray"



5.1 KM

10 HEAD ST RESERVE

Beside Elwood Croquet Club,
1927.
Sign on park bench.
Pretty little park.
Sing "All about Elwood"



1.3 KM

3 SUNDIAL BESIDE ELWOOD CANAL

Near Keats St.
Sign on park bench.
Link to schools, local writer, old
dance hall.
Sing "Carry On"



3.6 KM

7 POINT ORMOND CAFE

Foreshore promenade.
Sign near café.
Great place to stop for coffee or
ice cream.
Sing "La Mar estaba serena"



5.8 KM

11 ELWOOD CANAL LINEAR RESERVE

Foam St footbridge.
Sign on footbridge railings.
Lush, leafy canal walk.
Sing "The Rakali Hop" and
"Kein schöner Land in dieser Zeit"



2.0 KM

4 ELWOOD SOURDOUGH HISTORIC SITE

Canal path, near corner of
Addison St. Sign on park bench.
Site of colourful and much-loved
local bakery 2013-2025.
Sing "In toast we trust"



4.1 KM

8 BEHIND ELWOOD SAILING CLUB

Sign on picnic table.
Foreshore bushland.
First Nations history.
Sing "Nerm"



6.8 KM

12 THE KING OF TONGA BAR

164A Tennyson St.
Sign at entrance.
Watering hole for Elwood
Community Choir.
Sing "Elwood Song" and
"King of Tonga Conga"