

[View this email in your browser](#)



Dear << Test First Name >>

Welcome again to the ESNLC Newsletter. This month we are highlighting the enterprising and extraordinary organisation empowering Refugee, Migrant and Asylum Seeker Women, SisterWorks.



SisterWorks

In 2013, a band of 25 enterprising refugees, led by Luz Restrepo, a political refugee from Colombia, along with a local committee of volunteers incorporated to create a wonderful organisation aimed at empowering women and crafting items for sale around Melbourne. The organisation is now based out of a retail shopfront on 393 Swan Street, Richmond. ESNLC is lucky enough to be one of the original supporters of the program, having provided a space for SisterWorks to grow and develop during its infancy.

SisterWorks create a large range of products through their shop, including accessories, children's toys, cards, vouchers, home-wares, jewellery, and gift cards. Public and private workshops, led by the SisterWorks Entrepreneurs, are used to create most of these products. Other products are also brought in the shopfront by entrepreneurs who create their products independently. These

entrepreneurs are migrant, asylum seeker and refugee women who help to run the organisation and fill the store with products. The products that are on offer and created in these workshops are mostly designed by the entrepreneurs themselves, giving these women an even greater opportunity to be creative and entrepreneurial.



SisterWorks helps to empower these entrepreneurs by giving women opportunities to demonstrate leadership, develop managing skills, and use their culture to create interesting and diverse products. ESLNC is proud to have supported such a progressive and positive organisation like SisterWorks, and we highly recommend taking a trip across to Richmond, or visit shop.sisterworks.org.au to peruse their amazing goods.

Programs & Facilities

Poet's Garden

Did you know that hiding behind the facade of ESNLC's house is a beautiful park/garden. Hosting a playground, open space, and a community garden, Poet's Garden is a great place to mingle and meet some of you local community.

Pop-up Toy Shop

From the 2nd to the 13th of July ESNLC will be hosting a Pop-Up Toy Sale, where you can find great quality second-hand educational toys for babies to preschoolers. So come down to ESNLC 9:30 a.m. to 4:30 p.m. on any of those dates to find a bargain.

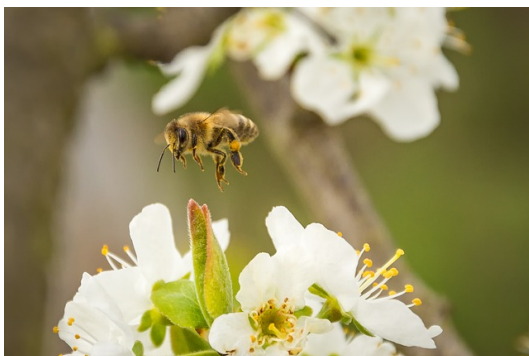
What's On!

Winja Ulupna

At 6:30 p.m. on the 18th of June ESLNC will be hosting the Winja Ulupna: *Voices of Women in Recovery* Event. This event will



comprise of readings and artworks created by those involved with Winja Ulupna, a "Women's Haven" for Koori women who suffer from alcoholism or a drug dependency problem. Find out more at the [Ngwala website](#), and we hope to see you there.



Working Bee

We will be having a working bee on the 21st of July with the goal of doing some spring cleaning, clearing out Room 5, and just maintaining order in the centre. The working bee will commence 1pm and hopefully be finished by 4pm. We would love your support and to see you there!

New Committee

Following the 2018 Annual General Meeting, a new member has been elected to join the ESNLC Committee. Chris Lamb aims to bring his skills in Communications & Media Studies to help upgrade and expand the governance of the Learning Centre.



 [Follow us on Facebook, to keep up to date on the latest news!](#)

 [To find out more about courses and to learn more visit our website:](#)

Copyright © 2020 Elwood St Kilda Neighbourhood Learning Centre, All rights reserved.
You are receiving this email because you opted in via our website.

Our mailing address is:

Elwood St Kilda Neighbourhood Learning Centre
87 Tennyson Street
Elwood, VIC 3184
Australia

[Add us to your address book](#)

Want to change how you receive these emails?
You can [update your preferences](#) or [unsubscribe from this list](#).



